



**ROYAL**  
**WHEELS & ACCESSORIES**  
**BY**  
**INSTANT TOOLS INC.**



## ■ INTRODUCTION

Established in 1993, Instant Tools Incorporated, also known as Royal Wheels & Accessories, has been continuously developing new products and has become one of the leading manufacturers and importers of wheel accessories, tire repair materials, and rims.

Dedicated to high quality, we only offer products manufactured by ISO certified factories. Our QC team inspects every load before it leaves our factories to make sure our customers receive exactly what they ordered.

We are proud of our product quality, efficient service and competitive pricing. We are looking forward to servicing you. Give us a try!

## ■ We also provide the following services

### CUSTOM PACKAGING

We special pack your products, so they come ready to be displayed and sold in retail stores. Our blister-carded and clamshelled products are sold in many national chain stores under our customers' private labels.

### SOURCING

Throughout the years in working with our suppliers, we have established strong networks in China which enable us to virtually find anything for you. We have successfully connected our clients with overseas manufacturers, not only in automotive-related product lines, but in other fields as well. We have found them sources for OTR giant tires, baby bottles, kites, and fashion items, just to name a few.

### LOGISTIC SERVICES

We can help you in all links of the supply chain, from order-placing to delivering to your door. We even drop ship to your customers. If you are buying from us, all these services are included in your purchase prices.



## ■ **TABLE OF CONTENTS**

### **WHEEL ACCESSORIES**

Conical Seat Lug Nuts . . . . .	2
ET Nuts . . . . .	3
Spline Drive Nuts, Bolts and Keys . . . . .	4
Tuner Nuts, Lug Bolts, Bolt Locks and Studs . . . . .	5
Wheel Locks . . . . .	6
Lug Wrenches, Bolt Pattern Gauge and Thread Gauges . . . . .	7
Wheel Inserts, Hub Centric Rings and Hub Centric Spacers . . . . .	8
Wheel Spacers . . . . .	9
Billet Adapters . . . . .	11
Dust Covers . . . . .	13

### **TIRE REPAIR SUPPLIES**

Snap-in Valve Stems . . . . .	14
Bolt-in Valve Stems . . . . .	15
Truck Valve Stems . . . . .	16
Large Bore Valve Stems . . . . .	17
Other Valve Stems . . . . .	18
Valve Extensions . . . . .	19
Valve Parts and Accessories . . . . .	20
Air Chucks and Tire Gauges . . . . .	22
Air Tool and Hose Accessories . . . . .	23
Tire Service Hand Tools . . . . .	24
Tire Spreaders and Tire Machine Parts and Accessories . . . . .	26
Patches, Tire Strings and String Kits . . . . .	27
Wheel Weights . . . . .	28
TPMS Parts and Accessories . . . . .	28

### **WHEELS AND DISPLAY**

Wire Wheel and Wire Wheel Parts . . . . .	29
Wheel Hooks and Display Racks . . . . .	30



## ■ CONICAL SEAT LUG NUTS



### Conical Seat Bulge Nuts, Flat Top

1.38" Tall. 3/4" Hex. 60 Degree. Chrome-Plated.

Part No.	Thread Size	Part No.	Thread Size
5450	1/2"	5455	12x1.5
5451	9/16"	5457	12x1.25
5452	7/16"	5458	14x2
5454	14x1.5	5459	12x1.75



### Conical Seat Bulge Nuts for Trucks

1.75" Tall. 3/4" Hex. 60 Degree. Chrome-Plated.

Part No.	Thread Size
5451L	9/16"
5454L	14x1.5
5458L	14x2
5459L	12x1.75



### Conical Seat Bulge Nuts for Trucks

1.90" Tall. 3/4" Hex. 60 Degree. Chrome-Plated.

Part No.	Thread Size
5451XL	9/16"
5454XL	14x1.5
5458XL	14x2
5459XL	12x1.75



### Open End Conical Seat Bulge Nuts

0.827" Tall. 19mm Hex. 60 Degree. Zinc-Plated.

Part No.	Thread Size	Part No.	Thread Size
5550	1/2"	5555	12x1.5
5551	9/16"	5556	14x2
5552	7/16"	5557	12x1.25
5554	14x1.5	5559	12x1.75



### Conical Seat Bulge Nuts, 2-Piece

Heat Treated. 1.38" Tall. 3/4" Hex. 60 Degree. Chrome-Plated.

Part No.	Thread Size	Part No.	Thread Size
5400	1/2"	5404	14x1.5
5401	9/16"	5405	12x1.5
5402	7/16"	5406	12x1.75
5403	14x2	5407	12x1.25



## ■ CONICAL SEAT LUG NUTS



### Conical Seat Bulge Nuts, 2-Piece, Tall

Heat Treated. 1.75" Tall. 13/16" Hex. 60 Degree. Chrome-Plated.

Part No.	Thread Size	Part No.	Thread Size
5400L	1/2"	5404L	14x1.5
5401L	9/16"	5405L	12x1.5
5402L	7/16"	5406L	12x1.75
5403L	14x2	5407L	12x1.25



### Conical Seat Bulge Nuts, 2-Piece, Extra-Tall

Heat Treated. 2.02" Tall. 13/16" Hex. 60 Degree. Chrome-Plated.

Part No.	Thread Size	Part No.	Thread Size
5400XL	1/2"	5404XL	14x1.5
5401XL	9/16"	5405XL	12x1.5
5402XL	7/16"	5406XL	12x1.75
5403XL	14x2	5407XL	12x1.25

## ■ ET NUTS



### ET Bulge Lug Nuts

1.44" Tall. 60 Degree. 3/4" Hex. Chrome-Plated.

Part No.	Thread Size	Part No.	Thread Size
5200	1/2"	5205	12x1.5
5201	9/16"	5207	12x1.25
5202	7/16"	5208	14x2
5204	14x1.5	5209	12x1.75



### Open ET Bulge Lug Nuts

1.26" Tall. 60 Degree. 3/4" Hex. Chrome-Plated.

Part No.	Thread Size	Part No.	Thread Size
5300	1/2"	5305	12x1.5
5301	9/16"	5307	12x1.25
5302	7/16"	5308	14x2
5304	14x1.5	5309	12x1.75



## ■ SPLINE DRIVE NUTS, BOLTS AND KEYS



### Conical Spline Drive Nuts, Open End

0.85" Tall. 60 Degree. 6-Cut Design. Chrome-Plated.

Part No.	Thread Size	Part No.	Thread Size
5660	1/2"	5667	12x1.25
5662	7/16"	5669	12x1.75
5665	12x1.5		
5699-SK Key, 3/4" & 13/16" Hex, 3.52" Tall			



### Conical Spline Drive Nuts for Passenger Cars

1.38" Tall. 60 Degree. 6-Cut Design. Chrome-Plated.

Part No.	Thread Size	Part No.	Thread Size
5650	1/2"	5655	12x1.5
5652	7/16"	5657	12x1.25
5653	14x2	5658	9/16"
5654	14x1.5	5659	12x1.75
5699-SK Key, 3/4" & 13/16" Hex, 3.52" Tall			



### Conical Spline Drive Nuts for Trucks

2" Tall. 60 Degree. 7-Cut Design. Chrome-Plated.

Part No.	Thread Size
5654DN	14x1.5
5656DN	14x2
5658DN	9/16"
5699-SKT Key, 13/16" & 7/8" Hex, 3.52" Tall	



### Spline Drive Lug Bolts

6-Cut Design. Chrome-Plated.

Part No.	Thread Size	Part No.	Thread Size
5674/093	14x1.5, 0.93" Tall	5675/093	12x1.5, 0.93" Tall
5674/110	14x1.5, 1.10" Tall	5675/110	12x1.5, 1.10" Tall
5674/118	14x1.5, 1.18" Tall	5675/118	12x1.5, 1.18" Tall
5699-SK Key, 13/16" & 7/8" Hex, 3.52" Tall			

For updated product information, please visit us at:

[www.instanttoolsusa.com](http://www.instanttoolsusa.com)

[www.royal-wheels.com](http://www.royal-wheels.com)



## ■ TUNER NUTS, LUG BOLTS, BOLT LOCKS, AND STUDS



### Tuner Nuts

1.20" Tall. 60 Degree. 8-Point. Chrome-Plated.

Part No.	Thread Size	Part No.	Thread Size
5640	1/2"	5647	12x1.25
5645	12x1.5	5649	12x1.75

TK-2191 Key, 3/4" & 13/16 Hex



### Lug Bolts

0.93" or 1.18" Tall. 60 Degree. 17mm Hex. Chrome-Plated.

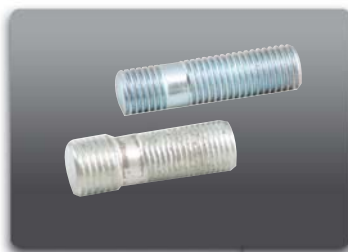
Part No.	Thread Size	Part No.	Thread Size
20-4065/093	12x1.5, 0.93" Tall	20-4069/093	14x1.5, 0.93" Tall
20-4065/118	12x1.5, 1.18" Tall	20-4069/100	14x1.5, 1.00" Tall
20-4065/150	12x1.5, 1.50" Tall	20-4069/118	14x1.5, 1.18" Tall
		20-4069/150	14x1.5, 1.50" Tall
20-4067/093	12x1.75, 0.93" Tall	20-4069/190	14x1.5, 1.90" Tall



### Bolt Locks

Chrome-Plated. Sold as set of 4 bolts and 1 Key.

Part No.	Thread Size
24-1226-C	12x1.5 RH. 2.03" Tall. 1.02" Thread Length.
24-1227-C	12x1.25 RH. 2.03" Tall. 1.02" Thread Length.
24-1228-C	12x1.75 RH. 2.03" Tall. 1.02" Thread Length.
24-1340-C	14x1.5 RH. 2.17" Tall. 1.18" Thread Length.



### Wheel Studs

Custom Sizes and Lengths Available

Part No.	Top	Base	Length	Part No.	Top	Base	Length
ST-001	12x1.5	12x1.5	1 3/4"	ST-005	12x1.25	12x1.25	1 3/4"
ST-002	12x1.5	12x1.5	1 1/2"	ST-006	1/2"x20	1/2"x20	1 1/2"
ST-003	1/2"x20	14x1.5	1 1/2"	ST-007	14x1.5	14x1.5	1 1/2"
ST-004	12x1.5	12x1.5	2 1/4"				

We can special pack all our products, so they are ready for  
retail when delivered to your door



## WHEEL LOCKS



### Open-End Acorn Wheel Locks

0.86" Tall. 60 Degree. 3/4" & 13/16" Dual Hex Socket Key. Chrome-Plated. Sold in set of 4 locks and 1 key.

Part No.	Thread Size	Part No.	Thread Size
OE-001	7/16"	OE-007	12x1.5
OE-003	1/2"	OE-008	12x1.75
OE-004	9/16"	OE-009	14x1.5
OE-005	12x1.25	OE-011	14x2



### Acorn Wheel Locks

1.26" Tall. 60 Degree. 3/4" & 13/16" Dual Hex Socket Key. Chrome-Plated. Sold in set of 4 locks and 1 key.

Part No.	Thread Size	Part No.	Thread Size
AC-001	7/16"	AC-007	12x1.5
AC-003	1/2"	AC-008	12x1.75
AC-004	9/16"	AC-009	14x1.5
AC-005	12x1.25	AC-011	14x2



### Acorn Wheel Locks, Long

1.75" Tall. 60 Degree. 3/4" & 13/16" Dual Hex Socket Key. Chrome-Plated. Sold in set of 4 locks and 1 key.

Part No.	Thread Size	Part No.	Thread Size
AC-001L	7/16"	AC-007L	12x1.5
AC-003L	1/2"	AC-008L	12x1.75
AC-004L	9/16"	AC-009L	14x1.5
AC-005L	12x1.25	AC-011L	14x2



### Acorn Wheel Locks, Extra Long

1.90" Tall. 60 Degree. 3/4" & 13/16" Dual Hex Socket Key. Chrome-Plated. Sold in set of 4 locks and 1 key.

Part No.	Thread Size	Part No.	Thread Size
AC-001XL	7/16"	AC-007XL	12x1.5
AC-003XL	1/2"	AC-008XL	12x1.75
AC-004XL	9/16"	AC-009XL	14x1.5
AC-005XL	12x1.25	AC-011XL	14x2



### Acorn Wheel Locks, Super Long

2.02" Tall. 60 Degree. 3/4" & 13/16" Dual Hex Socket Key. Chrome-Plated. Sold in set of 4 locks and 1 key.

Part No.	Thread Size
AC-004SL	9/16"
AC-008SL	12x1.75
AC-009SL	14x1.5
AC-011SL	14x2





**LUG WRENCHES, BOLT PATTERN GAUGE AND THREAD GAUGES**



**Lug Wrench Adapters**

2.50" Tall. Chrome-Plated.

Part No.	Male	Female	Part No.	Male	Female
TT-025	3/4"	3/4"	TT-200	13/16	3/4"
TT-050	13/16"	3/4"	TT-300	7/8"	13/16"
TT-150	3/4"	13/16"	TT-400	7/8"	7/8"



**Dual Head Lug Wrench Adapters**

2.68" Tall. Chrome-Plated.

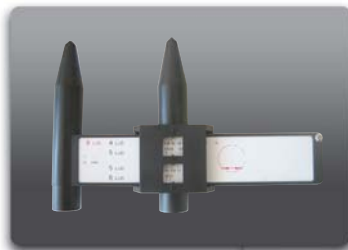
Part No.	Male	Male	Female	Part No.	Male	Male	Female
TT-01	3/4"	13/16"	13/16"	TT-04	3/4"	13/16"	3/4"
TT-02	13/16"	7/8"	13/16"	TT-05	13/16"	7/8"	3/4"
TT-03	13/16"	7/8"	7/8"				



**Telescoping Power Wrench**

Telescoping handle extends to 20". Two dual hex sockets to fit 4 sizes. Comes with storage bag.

Part No.	Description
PWT-01	Power Wrench Kit. Includes: 1 Telescoping Handle 1 Dual Hex Socket of 17mm (11/16") and 19mm (3/4") 1 Dual Hex Socket of 21mm (13/16") and 23mm (7/8") 1 Poly Storage Bag



**Bolt Pattern Gauge**

Dial Gauge Measures 4-, 5-, 6-, and 8- Lug Bolt Patterns

Part No.	Description
BPC-01	Universal PCD Gauge



**Thread Gauges**

8-Piece set has both male and female threads to measure lug nuts, wheel locks, bolts and studs.

Part No.	Description
TG-08	8-Piece Thread Gauge Set. Includes the following sizes: 7/16" 12x1.5 1/2" 12x1.75 9/16" 14x1.5 12x1.25 14x2



## WHEEL INSERTS, HUB CENTRIC RINGS AND HUB CENTRIC SPACERS



### Wheel Inserts

Zinc-plated or black finish. Custom Finish Available.

Part No.	Style	I.D.	Large O.D.	Small O.D.	Height
RN-04	Conical Seat	0.63"	1.10"	0.825"	0.425"
RN-05	Ball Seat	0.63"	1.25"	1.020"	0.410"



### Hub Centric Rings

Colored aluminum or black nylon. Custom Sizes Available.

Part No.	O.D.	I.D.	Part No.	O.D.	I.D.
HR-7201	72.62mm	54.06mm	HR-7301	73.00mm	54.06mm
HR-7202	72.62mm	56.15mm	HR-7302	73.00mm	56.15mm
HR-7203	72.62mm	57.10mm	HR-7303	73.00mm	57.10mm
HR-7204	72.62mm	59.61mm	HR-7304	73.00mm	59.61mm
HR-7205	72.62mm	60.06mm	HR-7305	73.00mm	60.06mm
HR-7206	72.62mm	63.90mm	HR-7306	73.00mm	63.90mm
HR-7207	72.62mm	64.15mm	HR-7307	73.00mm	64.15mm
HR-7208	72.62mm	66.06mm	HR-7308	73.00mm	66.06mm
HR-7209	72.62mm	66.56mm	HR-7309	73.00mm	66.56mm
HR-7210	72.62mm	67.06mm	HR-7310	73.00mm	67.06mm
HR-7211	72.62mm	67.20mm	HR-7311	73.00mm	67.20mm
HR-7212	72.62mm	70.10mm	HR-7312	73.00mm	70.10mm
HR-7213	72.62mm	70.30mm	HR-7313	73.00mm	70.30mm



### Hub Centric Spacers

Forged 6061 T6 Billet Aluminum. CNC Machined. Custom Sizes Available. Blank Disc Available.

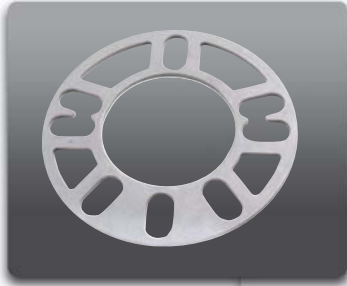
Part No.	Wheel I.D.	Hub I.D.	Bolt Pattern	Spacer O.D.	Thickness	For
HCS-101	66.60mm	66.60mm	5 x 112	146mm	13mm or 20mm	Mercedes
HCS-102	73.00mm	66.60mm	5 x 112	146mm	13mm or 20mm	Mercedes
HCS-103	74.10mm	66.60mm	5 x 112	146mm	13mm or 20mm	Mercedes
HCS-201	72.60mm	72.60mm	5 x 120	146mm	13mm or 20mm	BMW
HCS-202	74.10mm	74.10mm	5 x 120	146mm	13mm or 20mm	BMW
HCS-301 *	57.10mm	57.10mm	5 x 100/112	146mm	13mm or 20mm	Audi

\* no collar

We ship from our warehouse in California, or if you prefer, we can arrange factory direct shipments from China to your door, at discounted prices.



## WHEEL SPACERS



### WS-100 4-LUG & 5-LUG

Fit	4-Lug	5-Lug	I.D.	O.D.	Thickness	Fit	4-Lug	5-Lug	I.D.	O.D.	Thickness
Metric	98mm	100mm	78mm	151mm	3mm	Standard	3 3/4"	4"	3 1/16"	5 15/16"	1/8"
	100mm	108mm					4"	4 1/4"			
	108mm	112mm					4 1/4"	4 1/2"			
	110mm	114.3mm					4 1/2"	4 3/4"			
	114.3mm	115mm						5"			
	120mm	120mm									
	130mm	130mm									



### WS-101 4-LUG

Fit	4-Lug	I.D.	O.D.	Thickness	Fit	4-Lug	I.D.	O.D.	Thickness
Metric	98mm	71mm	152mm	8mm	Standard	3 3/4"	2 13/16"	6"	5/16"
	100mm					4"			
	108mm					4 1/4"			
	110mm					4 1/2"			
	114.3mm								
	120mm								



### WS-102 5-LUG

Fit	5-Lug	I.D.	O.D.	Thickness	Fit	5-Lug	I.D.	O.D.	Thickness
Metric	108mm	89mm	165mm	8mm	Standard	4 1/4"	3 1/2"	6 1/2"	5/16"
	112mm					4 1/2"			
	114.3mm					4 3/4"			
	115mm					5"			
	120mm								
	130mm								
	135mm								



### WS-103 5-LUG & 6-LUG

Fit	5-Lug	6-Lug	I.D.	O.D.	Thickness
Metric	135mm	135mm	108mm	178mm	6mm
	139.7mm	139.7mm			
Standard	5 1/2"	5 1/2"	4 1/4"	7"	1/4"

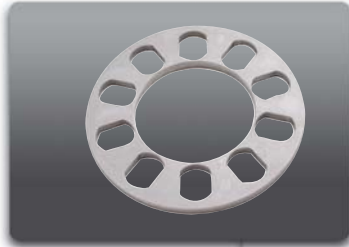


### WS-104 8-LUG

Fit	8-Lug	I.D.	O.D.	Thickness
Metric	165.1mm	127mm	208mm	6mm
	170mm			
Standard	6 1/2"	5"	8 3/16"	1/4"

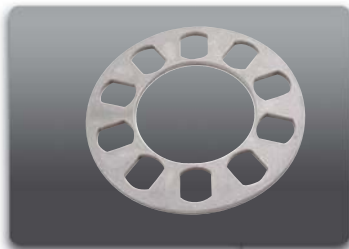


## ■ WHEEL SPACERS



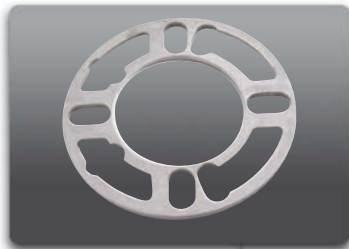
### WS-105 5-LUG

Fit	5-Lug	I.D.	O.D.	Thickness	Fit	5-Lug	I.D.	O.D.	Thickness
Metric	100mm	80mm	152mm	8mm	Standard	4"	3 1/8"	6"	5/16"
	108mm					4 1/4"			
	112mm					4 1/2"			
	114.3mm					4 3/4"			
	115mm								
	120mm								



### WS-106 5-LUG

Fit	5-Lug	I.D.	O.D.	Thickness	Fit	5-Lug	I.D.	O.D.	Thickness
Metric	100mm	80mm	152mm	5mm	Standard	4"	3 1/8"	6"	3/16"
	108mm					4 1/4"			
	112mm					4 1/2"			
	114.3mm					4 3/4"			
	115mm								
	120mm								



### WS-109 4-LUG & 5-LUG

Fit	4-Lug	5-Lug	I.D.	O.D.	Thickness	Fit	4-Lug	5-Lug	I.D.	O.D.	Thickness
Metric	100mm	108mm	78mm	143mm	5mm	Standard	3 3/4"	4"	3 1/16"	5 5/8"	3/16"
	108mm	112mm					4"	4 1/4"			
	110mm	114.3mm					4 1/4"	4 1/2"			
	114.3mm	115mm					4 1/2"	4 3/4"			
	120mm	120mm									



### WS-110 5-LUG

Fit	5-Lug	I.D.	O.D.	Thickness	Fit	5-Lug	I.D.	O.D.	Thickness
Metric	108mm	83mm	154mm	12.7mm	Standard	4 1/4"	3 1/4"	6 1/16"	1/2"
	112mm					4 1/2"			
	114.3mm					4 3/4"			
	115mm					5"			
	120mm								
	130mm								

We are looking for Sales Reps. If you are interested, please contact us:

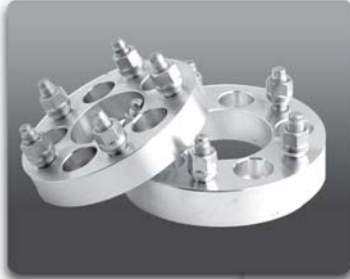
1-888-668-9588



## ■ BILLET ADAPTERS

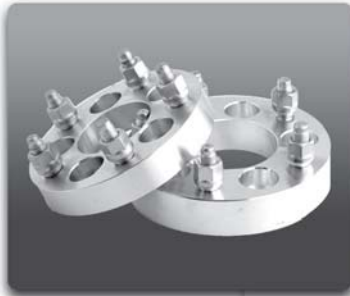
Made of forged 6061 billet aluminum.

Custom Bolt Patterns, Stud Thread Sizes, Bore Sizes and Thicknesses Available.



### 4 LUG BOLT PATTERNS

Part No.	Thickness	Vehicle Bolt Pattern	Wheel Bolt Pattern	I.D.	O.D.	Stud Thread Size
4100/425-4450A	1.00"	4x100,4x4.25	4x4.5	71	150	12x1.5
4100/450-4425A	1.00"	4x100,4x4.5	4x4.25	71	150	12x1.5
4425/450-4100A	1.00"	4x4.25,4x4.5	4x100	71	150	12x1.5
4450-4450A	1.00"	4x4.5	4x4.5	71	150	12x1.5
4450-4450B	1.25"	4x4.5	4x4.5	71	150	12x1.5

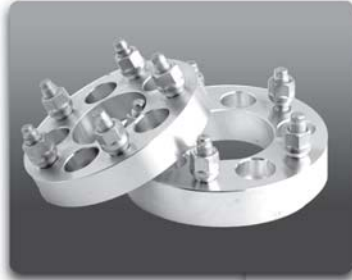


### 5 LUG BOLT PATTERNS

Part No.	Thickness	Vehicle Bolt Pattern	Wheel Bolt Pattern	I.D.	O.D.	Stud Thread Size
5100-5450A	1.00"	5x100	5x4.5	64	150	12x1.5
5100-5450B	1.25"	5x100	5x4.5	64	150	12x1.5
5100/425-5450B	1.25"	5x100,5x4.25	5x4.5	73.1	150	12x1.5
5135/500-5135C	1.50"	5x135,5x5	5x135	87.18	176	1/2-20
5135/500-5450B	1.25"	5x135,5x5	5x4.5	87.1	176	12x1.5
5135/500-5475B	1.25"	5x135,5x5	5x4.75	87.1	176	12x1.5
5135/500-5500C	1.50"	5x135,5x5	5x5	87.1	176	1/2-20
5135/500-5550C	1.50"	5x135,5x5	5x5.5	87.18	176	1/2-20
5150-5150C	1.50"	5x150	5x150	110	204	14x1.5
5425-5450B	1.25"	5x4.25	5x4.5	73.1	150	12x1.5
5450-5450A	1.00"	5x4.5	5x4.5	74	164	12x1.5
5450-5450AWI	1.00"	5x4.5	5x4.5	74	164	1/2-20
5450-5450B	1.25"	5x4.5	5x4.5	74	164	12x1.5
5450-5450BWI	1.25"	5x4.5	5x4.5	74	164	1/2-20
5450-5450C	1.50"	5x4.5	5x4.5	82	164	1/2-20
5450-5450E	2.00"	5x4.5	5x4.5	82	164	1/2-20
5450/475-5135B	1.25"	5x4.5,5x4.75	5x135	74	164	12x1.5
5450/475-5450B	1.25"	5x4.5,5x4.75	5x4.5	74	164	12x1.5
5450/475-5475B	1.25"	5x4.5,5x4.75	5x4.75	74	164	12x1.5
5450/475-5500B	1.25"	5x4.5,5x4.75	5x5	74	164	12x1.5
5450/475-5550B	1.25"	5x4.5,5x4.75	5x5.5	74	164	12x1.5
5475-5475A	1.00"	5x4.75	5x4.75	74	164	12x1.5
5475-5475B	1.25"	5x4.75	5x4.75	74	164	12x1.5
5475-5475C	1.50"	5x4.75	5x4.75	74	164	12x1.5
5475-5475E	2.00"	5x4.75	5x4.75	82.55	164	12x1.5
5475-5475G	2.50"	5x4.75	5x4.75	82.55	164	12x1.5
5475/500-5500B	1.25"	5x4.75,5x5	5x5	78.1	164	1/2-20
5475/500-5500C	1.50"	5x4.75,5x5	5x5	78.1	164	1/2-20
5500/550-5135C	1.50"	5x5,5x5.5	5x135	87.18	176	1/2-20
5500/550-5450B	1.25"	5x5,5x5.5	5x4.5	87.18	176	12x1.5
5500/550-5475B	1.25"	5x5,5x5.5	5x4.75	87.18	176	12x1.5
5500/550-5500C	1.50"	5x5,5x5.5	5x5	87.18	176	12x1.5
5500/550-5550C	1.50"	5x5,5x5.5	5x5.5	87.18	176	1/2-20
5550-5550BWM	1.25"	5x5.5	5x5.5	108	176.7	1/2-20
5550-5550C	1.50"	5x5.5	5x5.5	108	176.7	1/2-20
5550-5550CAP	1.50"	5x5.5	5x5.5	108	176.7	9/16"
5550-5550E	2.00"	5x5.5	5x5.5	108	176	1/2-20
5550-5550EAP	2.00"	5x5.5	5x5.5	108	176	9/16"



## ■ BILLET ADAPTERS



### 6 LUG BOLT PATTERNS

Part No.	Thickness	Vehicle Bolt Pattern	Wheel Bolt Pattern	I.D.	O.D.	Stud Thread Size
6135-6135B108	1.25"	6x135	6x135	108	176	14x2
6135-6135C108	1.50"	6x135	6x135	108	176	14x2
6135-6550B108	1.25"	6x135	6x5.5	108	176	12x1.5
6135-6550C108	1.50"	6x135	6x5.5	108	176	12x1.5
6550-6135B108	1.25"	6x5.5	6x135	108	176	12x1.5
6550-6135C108	1.50"	6x5.5	6x135	108	176	12x1.5
6550-6550B108	1.25"	6x5.5	6x5.5	108	176	12x1.5
6550-6550BWM	1.25"	6x5.5	6x5.5	108	176	14x1.5
6550-6550C108	1.50"	6x5.5	6x5.5	108	176	12x1.5
6550-6550C78	1.50"	6x5.5	6x5.5	78.1	176	14x1.5
6550-6550CWM	1.50"	6x5.5	6x5.5	108	176	14x1.5
6550-6550E108	2.00"	6x5.5	6x5.5	108	176	12x1.5
6550-6550E78	2.00"	6x5.5	6x5.5	78.1	176	14x1.5
6550-6550EWM	2.00"	6x5.5	6x5.5	108	176	14x1.5



### 8 LUG BOLT PATTERNS

Part No.	Thickness	Vehicle Bolt Pattern	Wheel Bolt Pattern	I.D.	O.D.	Stud Thread Size
8170-8170C	1.50"	8x170	8x170	125	216	14x2
8170-8170E	2.00"	8x170	8x170	125	216	14x2
8170-8170EAP	2.00"	8x170	8x170	125	216	14x1.5
8170-8170G	2.50"	8x170	8x170	125	216	14x2
8170-8170I	3.00"	8x170	8x170	125	216	14x2
8170-8650E	2.00"	8x170	8x6.5	125	216	14x1.5
8200-8200E	2.00"	8x200	8x200	145	246	14x1.5
8200-8200I	3.00"	8x200	8x200	145	246	14x1.5
8650-8170E	2.00"	8x6.5	8x170	125	216	14x1.5
8650-8650C	1.50"	8x6.5	8x6.5	126.2	216	14x1.5
8650-8650CWM	1.50"	8x6.5	8x6.5	126.2	216	9/16"
8650-8650E	2.00"	8x6.5	8x6.5	126.2	216	14x1.5
8650-8650EWM	2.00"	8x6.5	8x6.5	126.2	216	9/16"
8650-8650G	2.50"	8x6.5	8x6.5	126.2	216	14x1.5
8650-8650GWM	2.50"	8x6.5	8x6.5	126.2	216	9/16"
8650-8650I	3.00"	8x6.5	8x6.5	126.2	216	14x1.5
8650-8650IWM	3.00"	8x6.5	8x6.5	126.2	216	9/16"



### 2-PC CONVERSION ADAPTERS

Part No.	Thickness	Vehicle Bolt Pattern	Wheel Bolt Pattern	I.D.	O.D.	Stud Thread Size
4425-5450D	1.75"	4x4.25	5x4.5	77.5	176	12x1.5
4450-5450E	2.00"	4x4.5	5x4.5	77.5	176	12x1.5
5450-4450E	2.00"	5x4.5	4x4.5	77.5	176	12x1.5
6450-5450E	2.00"	6x4.5	5x4.5	78	176	12x1.5
6550-5450E	2.00"	6x5.5	5x4.5	80	176	12x1.5
6550-5450L	3.75"	6x5.5	5x4.5	108	176	12x1.5
6550-5500E	2.00"	6x5.5	5x5	80	176	12x1.5



## ■ DUST COVERS



### Stainless Steel Dust Covers

Part No.	Size	Bolt Pattern	Style	Part No.	Size	Bolt Pattern	Style
DC15AS	15"	5x4.5	Solid	DC15BS	15"	5x100	Solid
	16"	5x4.75			5x4.25		
		5x5				5x112	
DC17AS	17"	5x4.5	Solid	DC17AD	17"	5x4.5	Cross-Drilled
	18"	5x4.75			5x4.75		
		5x5				5x5	
DC17BS	17"	5x100	Solid	DC17CS	17"	5x135	Solid
	18"	5x4.25			5x5.5		
		5x112					
DC19AS	19"	5x4.5	Solid	DC19AD	19"	5x4.5	Cross-Drilled
	20"	5x4.75			5x4.75		
		5x5				5x5	
DC19BS	19"	5x135	Solid	DC19BD	19"	5x135	Cross-Drilled
	20"	5x5.5			20"	5x5.5	
DC19DS	19"	6x4.5	Solid	DC19DD	19"	6x4.5	Cross-Drilled
	20"	6x5.5			20"	6x5.5	
DC19ES	19"	8x6.5	Solid	DC19ED	19"	8x6.5	Cross-Drilled
	20"				20"		
DC19CS	19"	6x5	Solid	DC19FS	19"	5x5	Solid
	20"	6x135			20"	5x135	
DC21AS	21"	6x4.5	Solid	DC21AD	21"	6x4.5	Cross-Drilled
	22"	6x5.5			6x5.5		
DC21BS	21"	5x4.5	Solid	DC21BD	21"	5x4.5	Cross-Drilled
	22"	5x4.75			5x4.75		
		5x5				5x5	
DC21CS	21"	5x135	Solid	DC21CD	21"	5x135	Cross-Drilled
	22"	5x5.5			22"	5x5.5	
DC21DS	21"	6x5	Solid	DC21DD	21"	6x5	Cross-Drilled
	22"	6x135			22"	6x135	
DC21ES	21"	8x6.5	Solid	DC21ED	21"	8x6.5	Cross-Drilled
	22"				22"		
DC23AS	23"	5x135	Solid	DC23AD	23"	5x135	Cross-Drilled
	24"	5x5.5			24"	5x5.5	
DC23BS	23"	5x4.5	Solid	DC23BD	23"	5x4.5	Cross-Drilled
		5x4.75				5x4.75	
DC23CS	23"	5x5	Solid	DC23CD	23"	5x5	Cross-Drilled
	24"	5x135			24"	5x135	
DC23DS	23"	6x4.5	Solid	DC23DD	23"	6x4.5	Cross-Drilled
	24"	6x5.5			24"	6x5.5	



## ■ SNAP-IN VALVE STEMS



### Tubeless Passenger/Light Truck Tire Valves

Industrial standard EPDM rubber snap-in valves for tubeless bias or radial passenger and light truck tires. Completed with plastic dome-type valve caps and high-temp valve cores. The "C" version comes with chrome-plated brass cap and sleeve. The "CF" version comes with chrome-plated brass cap and full length sleeve.

Part No.	Valve Hole	Effective Length	
TR412	0.453	1.00"	
TR412C	0.453	1.00"	Chrome
TR412CF	0.453	1.00"	Chrome w/Full Sleeve
TR413	0.453	1.25"	
TR413C	0.453	1.25"	Chrome
TR413CF	0.453	1.25"	Chrome w/Full Sleeve
TR414	0.453	1.50"	
TR414C	0.453	1.50"	Chrome
TR415	0.625	1.25"	
TR415C	0.625	1.25"	Chrome
TR418	0.453	2.00"	
TR418C	0.453	2.00"	Chrome
TR423	0.453	2.50"	
TR425	0.625	2.00"	



### High Pressure Snap-In Tire Valves

Rated to 100 psi. Made of EPDM rubber and completed with plastic dome-type valve cap and high pressure red valve core. The "C" version comes with chrome-plated brass cap and full length sleeve.

Part No.	Valve Hole	Effective Length	
TR600HP	0.453	1.25"	
TR600HP-C	0.453	1.25"	Chrome
TR602HP	0.453	2.00"	
TR801HP	0.625	1.25"	
TR802HP	0.625	2.00"	

Didn't find what you're looking for? Give us a call - 1-888-668-9588  
 We'll either find them or we'll work with you to have your special parts made.





## ■ BOLT-IN VALVE STEMS



### Outer-Mount Tire Valves

Nickel- or chrome-plated brass valve stems. Recommended for air pressure levels above 30 psi. Completed with nickel- or chrome-plated dome-type brass cap and high-temp red valve core. Include two EPDM rubber grommets to fit both .453 and .625 valve holes.

Part No.	Finish	Valve Holes	Effective Length
TR416	Nickel	.453/.625	1.50"
TR416L	Nickel	.453/.625	2.00"
VH-8	Chrome	.453/.625	1.00"



### Inner-Mount Tire Valves

Special valves to fit high performance custom wheels. Fit .453 valve hole. Chrome-plated brass valve body and dome-type valve cap. Come with high-temp red valve core and two EPDM rubber grommets.

Part No.	Eff. Height	Length	Bend Degree	Part No.	Eff. Height	Length	Bend Degree
VS-8XS	0.50"			VS-8XL	1.25"		
VS-8S	0.75"			VW-8-45	0.75"	1.00"	45
VS-8	1.00"			VW-8-90	0.25"	1.13"	90
VS-8L	1.13"			VW-9	0.25"	1.50"	90



### Flush-Mount Tire Valves

Low profile look to compliment custom wheels. Each set includes four chrome-plated brass valves, four chrome-plated flat or slotted dome surface caps, and one filler tube for easy inflation.

Part No.	Description
C511-SET	Complete Set of Flush Mount Valve Stem
C511-V	Flush-Mount Valve Stem Body
C511-C1	Flat Surface Cap (Customs Logo Available)
C511-C2	Slotted Dome Surface Cap
C511-T	Filler Tube



### 2-Piece Low-Bend 90 Degree Valves

Super low 90 degree bend valve stems to fit 2-pc, 3-pc or specialty custom rims. Each valve stem comes with one bended valve body, two EPDM rubber grommets, one dome washer, one hex button head and one flat valve cap. Custom Design and Lengths Available.

Part No.	Height	Length	Valve Hole
VW9-2PS	0.70"	1.80"	0.44"
VW9-2P	0.70"	2.80"	0.44"
VW9-2PL	0.70"	3.30"	0.44"



### Bolt-In Valves for Ford Trucks

For Ford "F" series trucks with 16" dual wheels. Fit .453" valve hole.

Part No.	Description
TV-01F	Chrome-Plated for Alloy Wheel, 1.50" Long
TV-02F	Bent Valve for Steel Wheel, 2.25" Long



## TRUCK VALVE STEMS



### Clamp-In Brass Truck Valves

For tubeless truck and bus tires. Fit .625 valve hole. Chrome version and custom bend available.

Part No.	Length	Part No.	Length
TR500	2.00"	TR571	3.38"
TR500-23	2.00" 23 Degree Bend	TR572	3.75"
TR501	1.50"	TR573	4.38"
TR501-OVAL	1.50" Fits Oval Valve Hole	TR574	5.00"
TR570	3.13"	TR575	1.13"



### Nickel-Plated Valves

Low-height 90 degree bend. For aluminum wheels. One piece construction. Fit .625 valve hole.

Part No.	Eff. Length	Second Bend Degree
TR509	4.75"	
TR510	5.50"	
TR511	4.25"	
TR513	2.63"	30
TR515	3.25"	30



### Metric Valve Stems

Straight or 27 degree bend to fit steel wheels with 9.7mm valve hole.

Part No.	Height (A)	Length (B)
V3-20-1	1.19"	Straight
V3-20-4	1.19"	2.38"
V3-20-5	1.19"	1.56"
V3-20-6	1.19"	3.38"
V3-20-7	1.19"	2.00"



### Nickel-Plated Metric Valve Stem

For aluminum wheels with 9.7mm valve hole. Custom bend available.

Part No.	Bend Degree	Height (A)	Length (B)	Part No.	Bend Degree	Height (A)	Length (B)
TR542	Straight	1.26"		TR545	Straight	3.50"	
TR543	Straight	2.31"		TR545D	60	0.98"	2.60"
TR543C	45	0.93"	1.38"	TR545E	75	0.98"	2.60"
TR543D	60	0.98"	1.38"	TR546	Straight	4.27"	
TR543E	75	0.98"	1.38"	TR546-36	36	0.98"	3.35"
TR544	Straight	2.86"		TR546D	60	0.98"	3.35"
TR544C	45	0.98"	1.94"	TR546E	75	0.98"	3.35"
TR544D	60	0.98"	1.94"	TR547D	60	0.98"	3.78"



## ■ LARGE BORE VALVE STEMS



### Tubeless Swivel Valves

From straight to four bends. Fit 13/16" valve hole. Comes with SP-2 spud.  
Custom Lengths and Bends Available

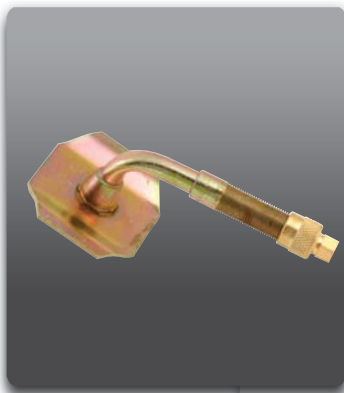
Part No.	Heights	Total Length	Bend Degree	Part No.	Heights	Total Length	Bend Degree
J670-03	1.63"		Straight	J660-03	1.89"	8.75"	90
J650-03	1.08"	3.12"	80	J669-03	1.08"	2.50"	90
J651-03	1.27"	4.69"	90	J4000-*	1.08"	CUSTOM	90
J652-03	1.08"	5.50"	86	J661-03	1.08"	4.50"	82/8
J653-03	1.08"	2.50"	80	J664-03	1.08"	8.75"	90/13
J654-03	1.08"	3.12"	60	J667-03	1.08"	7.50"	90/11
J655-03	1.08"	3.12"	74	J662-03	1.08"	14.00"	90/20/20
J656-03	2.62"	3.69"	90	J663-03	1.08"	25.00"	90/8/8
J657-03	1.08"	4.00"	80	J665-03	1.08"	32.00"	90/13/13
J658-03	1.08"	5.50"	80	J666-03	1.08"	20.12"	84/6/31/31
J659-03	1.89"	3.50"	90				



### Single-Bend and Double-Bend Tubeless Turret Valves

For planetary gear wheels. Fit 13/16" valve hole.

Part No.	Height	Total Length	Bend Degree	Part No.	Height	Total Length	Bend Degree
J691	0.50"	3.31"	18	J693	0.50"	5.00"	45/45
J694	0.50"	3.50"	28	J695	0.50"	4.12"	50/50
J690	0.50"	4.69"	28/28	J696	0.50"	4.25"	42/42
J692	0.50"	4.69"	28/18				



### Screw-On Repair Valves for Inner Tubes

Straight or bent. Ready to use with SP-1000 Tube Spud.

Part No.	Height	Length	Bend Degree	Part No.	Height	Length	Bend Degree
J-1014	1.91"		Straight	J-1078C	1.13"	4.88"	90
J-1076A	4.16"		Straight	J-1175A	5.28"		Straight
J-1076B	1.13"	3.25"	86	J-1175B	1.25"	4.25"	82
J-1076C	1.50"	2.88"	90	J-1175C	1.38"	4.13"	88
J-1076D	2.06"	2.31"	98	J-1179A	6.41"		Straight
J-1076E	1.38"	3.00"	88	J-1179B	1.38"	5.25"	88
J-1078A	5.78"		Straight	J-1179C	1.13"	5.50"	86
J-1078B	1.38"	4.62"	82				



## OTHER VALVE STEMS



### Tube Type Agricultural Air/Liquid Valves

With removable core housing for liquid fill. Comes with core housing (CH-3), high-temp red valve core, rim nut and cap.

Part No.	Heights w/CH-3	Height w/o CH-3
TR218A	1.63"	0.81"
TR220A	2.00"	1.19"



### Tubeless Agricultural Air/Liquid Valves

With removable core housing for liquid fill. Fits .625 valve hole. Comes with core housing (CH-3), high-temp valve core, hex nut, washer, rubber grommet and cap.

Part No.	Bend Degree	Height	Length	Part No.	Bend Degree	Height	Length
TR618A	Straight	1.88"		TR622A	90	1.75"	4.50"
TR618R*	Straight	1.88"		TR623A	65	1.50"	2.25"
TR621A	65	1.50"	3.00"				

\* TR618A with Rubber Snap-In Base



### Tank Valves

For use with compressed air tank.

Part No.	Description
TV300	1/8" NPT Tank Valve
TV301	1/4" NPT Barbed Tank Filler Valve
TV302	1/4" NPT Tank Valve



### Screw-On Standard Bore Tube Valves

For truck and bus tube-type tires. Screw onto SP1000 spud.

Part No.	Height	Length	Part No.	Height	Length
TR1075A	0.81"	3.0"	TR1175A	0.81"	4.5"
TR1077A	0.81"	4.1"	TR1177A	0.81"	3.7"
TR1078A	0.81"	5.0"	TR1179A	0.81"	5.6"



### Miscellaneous Valve Stems

Part No.	Description
TV-6008	Tractor Front Valve. Fits .453/.625 Valve Hole.
VS-6S	Fit 3-Piece or Motorcycle Wheels. 0.44" Effective Length.
VS-6L	Fit 3-Piece or Motorcycle Wheels. 0.83" Effective Length
TR430A	Tubeless Motorcycle Valve. Fit .327 Valve Hole.
TR13	Inner Tube Valve. Fit .453 Valve Hole.
TR15	Inner Tube Valve. Fit .625 Valve Hole.
TV478	Michelin Screw-On Valve. Single Bend. 5" Effective Length.
TV480	Michelin Screw-On Valve. Triple Bend. 4" Effective Length.



## ■ VALVE EXTENSIONS



### Tubeless Tire Valve Extensions

Perfect for hard-to-reach passenger and light truck valves. In chrome-plated brass or plastic. Custom Lengths Available.

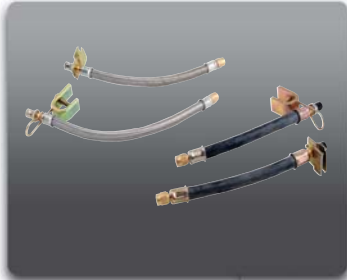
Part No.	Part No.	Effective Length	Part No.	Part No.	Effective Length
Chrome Brass	Plastic		Chrome Brass	Plastic	
ME-050	ME-050P	0.50"	ME-150	ME-150P	1.50"
ME-075	ME-075P	0.75"	ME-175	ME-175P	1.75"
ME-100	ME-100P	1.00"	ME-200	ME-200P	2.00"
ME-125	ME-125P	1.25"			



### Truck/Bus Tire Valve Extensions

Solid brass extensions for tubeless truck and bus tire valves. 1.25" or 0.75" collar height. Custom Lengths Available.

Part No.	1.25" Collar	Part No.	0.75" Collar	Effective Length
EX-1200		EX-0200		2"
EX-1300		EX-0300		3"
EX-1400		EX-0400		4"
EX-1500		EX-0500		5"
EX-1600		EX-0600		6"



### Flexible Valve Extensions

For easy access to the inner dual wheel on campers, RV and light trucks. With rubber hose or metal braided hose. Completed with clamps to secure extensions to wheels. Custom Lengths Available.

Part No.	Part No.	Effective Length	Part No.	Part No.	Effective Length
Rubber Hose	Metal Braided		Rubber Hose	Metal Braided	
EXF-0700	EXF-0700S	7.00"	EXF-0900	EXF-0900S	9.00"
EXF-0750	EXF-0750S	7.50"	EXF-1000	EXF-1000S	10.00"
EXF-0850	EXF-0850S	8.50"			

- ◆ Use V-Clamp to secure to wheel cut-out.
- ◆ Use U-Clamp to secure to rim.



### Bended Valve Extensions

Special use on standard bore valves. Custom Lengths and Bends Available.

Part No.	Bend Degree	Effective Length
EXB-586	90	1.38"
EXB-587	45	1.38"
EXB-588	135	1.38"
EXB-589	15	6.00"



### Double Seal Extension Cap

Prevent dirt and water from penetrating the cap. Allow for inflation and deflation without removing the cap.

Part No.	Effective Length
DME-050	0.50"



## ■ VALVE PARTS AND ACCESSORIES

ALL PARTS FOR ALL VALVES ARE AVAILABLE UPON REQUEST.  
 MOST POPULAR ITEMS ARE PRESENTED FOR EASY REFERENCE.



### Valve Cores

Part No.	Description
VC-01B	Std. Bore Core
VC-01R	Std. Bore Core, Red High-Temp Seal
VC-01G	Std. Bore Core for A/C, Green Seal
VC-01L	Std. Bore Core, Extra Long, Red Seal
VC-02S	Large Bore Core
VC-02L	Large Bore Core, Extra Long



### O-Rings, Rubber Grommets, Nuts and Washers

Part No.	Description
RG-7	Grommet for TR618A Series
RG-15	EPDM Grommet for TR500 Series
RG-39	Large Grommet for TR416/TR416L/VH-8. Fit .625 Valve Hole
RG-46	EDM Grommet for TR509 Series
RG-54	Small Grommet for TR416/TR416L/VH-8. Fit .453 Valve Hole
RG-60	O-Ring for TR543 Series
HN-1	Hex Nut for TR618A Series
HN-13	Brass Nut for TR500 Series
HN-17	Stainless Steel Nut for TR509 Series
HN-21	Nut for TR543 Series
RW-8	Brass Ring Washer for TR500 Series
RW-11	Ring Washer for TR618 Series



### Rim Nuts, Rim Spuds and Core Housings

Part No.	Description
RN-01	Nylon Rim Nut
RN-02	Rim Hole Reducer Bushing
RN-03	Brass Rim Nut
SP-2	Rim Spud for Large Bore Swivel Valves
SP-1000	Rim Spud for Large Bore Screw-On Repair Valves
CH-1	Core Housing for Old Style TR218 and TR220 Valves
CH-3	Core Housing for TR218A and TR618A Series



## ■ VALVE PARTS AND ACCESSORIES

ALL PARTS FOR ALL VALVES ARE AVAILABLE UPON REQUEST.  
 MOST POPULAR ITEMS ARE PRESENTED FOR EASY REFERENCE.



### Valve Caps, Valve Sleeves and Valve Adapters

Part No.	Description
CAP A	Chrome-Plated Short Dome Brass Cap
CAP C	Nickel-Plated Long Skirted Brass Cap
CAP C2	Nickel-Plated Long Skirted Brass Cap
CAP D	Chrome-Plated Large Hex Brass Cap
CAP E	Chrome-Plated Large Hex Head Brass Cap
CAP F	Nickel-Plated Short Brass Cap
CAP H	Chrome-Plated Core Remover Cap
CAP EG-A	Custom Color Aluminum Cap E with Logo on Top
CAP EG-B	Chrome-Plated Brass Cap E with Green O-Ring Logo on Top

\* Perfect for nitrogen  
 \* Custom logo available

*\* All above caps can be made in aluminum.*

*\* Custom colors available for aluminum caps*

CAP DP	Universal Cap, Made of Chrome-Plated Nylon, With Seal O-Ring.
CAP P	Plastic Valve Cap (Color Versions Available)
CAP PG	Large Green Plastic Valve Cap, Red Seal
CAP S	Chrome-Plated Plastic Cap & Sleeve Combo

CL-412	Chrome Sleeve for TR412
CL-412F	Full-Length Chrome Sleeve for TR412
CL-413	Chrome Sleeve for TR413
CL-413F	Full-Length Chrome Sleeve for TR413
CL-414	Chrome Sleeve for TR414
CL-415	Chrome Sleeve for TR415
CL-418	Chrome Sleeve for TR418

\* All sleeves can be made in aluminum

\* Custom colors available for aluminum sleeves

CAP-004	Screwdriver Cap for Large Bore Valves
CAP-005	Hex Cap for Large Bore Valves

VA-01	Nut Style Large to Standard Bore Adapter
VA-02	Cap Style Large to Standard Bore Adapter

We don't stock all the items. Some items may have to come from our overseas factories, and lead time may vary.



## ■ AIR CHUCKS AND TIRE GAUGES



### Standard Bore Air Chuck

Part No.	Description
AC-01	Clip-On Air Chuck, Fit 1/4" I.D. Hose. Open.
AC-01C	Clip-On Air Chuck, Fit 1/4" I.D. Hose. Closed.
AC-02	Ball Foot Air Chuck. 3/4" Hex. 1/4" NPT Female. Open.
AC-02C	Ball Foot Air Chuck. 3/4" Hex. 1/4" NPT Female. Closed.
AC-03	Bleeder Valve Assembly
AC-04	Clip-On Air Chuck. 1/4" Female Fitting. Open.
AC-04C	Clip-On Air Chuck. 1/4" Female Fitting. Closed.
AC-06	Ball Foot Air Chuck with Clip. Open.
AC-06C	Ball Foot Air Chuck with Clip. Closed.
AC-06RP	Replacement Clip for AC-06/AC-06C.
AC-07	Dual Foot Chuck. 1/4" NPT Female. 6". Closed.
AC-07B	Dual Foot Chuck. 1/4" NPT Female. 6". Closed. Black Finish.
AC-08	Push-On Reverse Angle Chuck. Closed.
AC-08B	Push-On Reverse Angle Chuck. Closed. Black Finish.
AC-08L	Lock-On Reverse Angle Chuck. Closed.
AC-08LB	Lock-On Reverse Angle Chuck. Closed. Black Finish.



### Tire Gauges

Part No.	Description
TGP-01	Low-Pressure Tire Gauge. 1-20 psi.
TGP-02	Passenger Gauge. 5-50 psi.
TGP-03	Passenger Gauge. 5-70 psi.
* Custom colors and printings available for the above gauges.	
TGP-04	Pencil Type Dual Foot Gauge. 20-120 psi.
TGP-05	Pocket Dual Foot Straight-On Gauge. 20-120 psi.
TGP-06	Extra Long Dual Foot Gauge. 10-150 psi.
TGP-07	Extra Long Dual Foot Straight-On Gauge. 10-150 psi.
* Black finish available for the above gauges.	



### Tire Tread Depth Gauges

Part No.	Description
TDG-01	Tire Tread Depth Gauge, In 32nd and mm.





## ■ AIR TOOL AND HOSE ACCESSORIES



### Solid Male Hose Barbs

Part No.	NPT Thread	Hose ID
AH-3000	1/8"	1/4" * With Seal O-Ring
AH-3108	1/8"	1/4"
AH-3109	1/4"	3/16"
AH-3110	1/4"	1/4"
AH-3112	3/8"	1/4"
AH-3113	1/4"	5/16"
AH-3115	1/4"	3/8"
AH-3116	3/8"	3/8"
AH-3117	1/4"	1/2"
AH-3118	3/8"	1/2"
AH-3119	1/2"	1/2"
AH-3120	1/2"	3/8"



### Swivel Male Hose Barbs

Part No.	NPT Thread	Hose ID
AH-3001	1/4"	1/4"



### Air Line Fitting Adapters

Part No.	Description
AH-4000	3/8" Female & 1/4" Male Adapter



### Barbed Splicers

Part No.	Hose ID
AH-3134	1/4"
AH-3135	5/16"
AH-3136	3/8"
AH-3137	1/2"



### Brass Ferrules

Part No.	Ferrule ID
BF-0527	0.527"
BF-0562	0.562"
BF-0656	0.656"
BF-750	0.750"
BF-0781	0.781"
BF-0900	0.900"



### Air Tool Adapters

Part No.	For Shank Size
QC-18	3/8" Thread x 3/8"
QC-19	3/8" Thread x 1", with Spacer
QC-20	1/8" (3.2mm)
QC-22	1/4" (6.3mm)
QC-23	5/16" (7.9mm)
QC-24	3/16" (4.8mm)



## ■ TIRE SERVICE HAND TOOLS

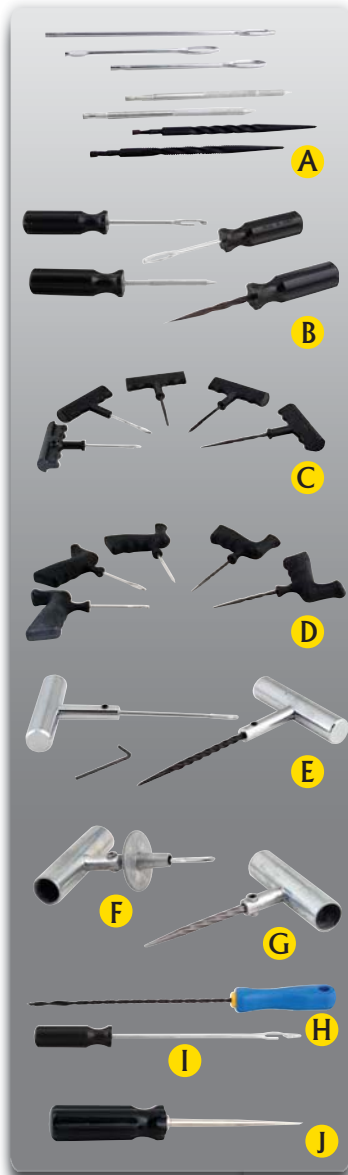


### Service Hand Tools

Part No.	Description	Picture Reference
VT-01	Valve Fishing Tool, Cable Style	1
VT-01C	Valve Fishing Tool, Chain Style	2
VT-02	Inner Liner Scraper	3
VT-02B	Rubber Scraper	4
VT-02RP	Replacement Blade for VT-02B	
VT-03	Metal Installation Tool for Snap-In Valve	5
VT-03P	Plastic Installation Tool for Snap-In Valve	6
VT-03S	Metal Installation Tool with "Scratch-Free" Plastic Wrap	7
VT-04	Metal Installation Tool w/Core Remover at One End	8
VT-04S	Metal Installation Tool w/Core Remover and Plastic Wrap	9
VT-21	2-Way Valve Tool	10
VT-41	4-Way Valve Tool	11
VT-41B	4-Way Valve Tool, Black	12
VT-930	Euro-Paste Brush	13
VT-931	Tire Brush	14
VT-932	White Sidewall Tire Brush	15
VT-964	Passenger Lube Swab, 10-1/2" Long	16
VT-965	Truck Lube Swab, 14" Long	16
VT-1113	Standard and Large Bore Core Remover	17
VT-1113B	Standard Core and Cap Remover	18
VT-1114	Buffer Stitcher	19
VT-1115	Core Remover with Red and Black Handle	20
VT-1115B	Core Remover with Red Oval Handle	21
VT-1115L	Extra Long Core Remover	22
VT-1115S	One-Piece Hex Steel Core Remover	23
VT-1116	Wheel Weight Pliers	24
VT-1121A	Ball Bearing Stitcher, 1-1/2" Wheel, 1/16" Face	25
VT-1121B	Ball Bearing Stitcher, 1-1/2" Wheel, 1/8" Face	25
VT-1121L	Ball Bearing Stitcher, 2" Wheel	26
VT-1124	Clamp-On Valve Puller	27
VT-1200L	Wire Puller, 7-1/4" Long	28
VT-1200S	Wire Puller, 4-1/4" Long	29
ST KIT	Spare Tire Removal Kit with Holding Plate and Application Guide	30, 31
ST-96091	Flat Head	
ST-96092	Pin Head	
ST-96093	Hex Head	
ST-96094	12mm Square Head	
ST-96095	Standard Square Head	
ST-96096	Slotted Square Head	
ST-96098	Square Head	
ST-PLATE	Holding Plate	



## ■ TIRE SERVICE HAND TOOLS



### Raspers, Probes and Insertion Needles

Part No.	Description	Picture
VT-1136	Smooth Spiral Rasp	
VT-1137	2-Stage Knurled Rasp	
VT-1139	Closed Eye Insertion Needle	
VT-1140	Split Eye Insertion Needle	
VT-1141	Knurled Rasp	
VT-1142	Open Eye Insertion Needle	
VT-1143	Barbed Rasp	

\* For all the above needles, standard length is 3.5"-4.5". Truck length is 7".  
\* Custom lengths are also available.

\* The following handle styles are available. Please specify by adding the code at the end of the part numbers when ordering.

SHAFT = Needle Only	A
S = Plastic Screwdriver Handle	B
T = Plastic T-Handle	C
L = Large Plastic Pistol Grip Handle	D
M = Hollow Metal T-Handle	
SM = Solid Metal T-Handle	E

VT-HM	Hallow Metal T-Handle with Set Screw and Wrench	
VT-SM	Solid Metal T-Handle with Set Screw and Wrench	
VT-1150	Split Eye with Die Cast T-Handle and Protection Ring	F
VT-1150N	Replacement Split Eye Needle for VT-1150	
VT-1150H	Die Cast T-Handle for VT-1150	
VT-1150P	Protection Ring for VT-1150	
VT-1151	Spiral Rasp with Die Cast T-Handle	G
VT-1151N	Replacement Spiral Rasp for VT-1151	
VT-1151H	Die Cast T-Handle for VT-1151	
VT-565	Passenger Knurled Open Eye Insertion Tool	
VT-575	Truck Knurled Open Eye Insertion Tool	H
VT-585	OTR Knurled Open Eye Insertion Tool	I
VT-919	Heavy Duty Pointed Awl	J

90% of our in-stock items are shipped within 24 hours.  
98% of our in-stock items are shipped within 48 hours.



## TIRE SPREADERS AND TIRE MACHINE PARTS AND ACCESSORIES



### Tire Spreader

Part No.	Description	Picture
VT-1119	Manual Tire Spreader	1
VT-1119A	Center Post Tire Spreader	2
VT-1119B	Adjustable Center Post/Workbench Tire Spreader Fits Tires 145-275	3
VT-1119M	Adjustable Swivel Tire Spreader with Stand Fits Tires 145-275	4



### Mounting/Demounting Duckheads

Part No.	Description	Picture
VT-1220	Nylon Duckhead with Washer and Screw. Coats 183061	1
VT-1221	Nylon Duckhead . Hunter RP60343	2

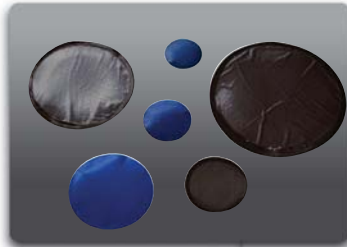


### Tire Machine Accessories

Part No.	Description	Picture
LB - ANGLE	Lube Bucket for Coats Center Post Changers	1
LB - STRA	Lube Bucket for All Coats Rim Clamp Tire Changers	2
VT-1222	Speedy Wing Nut for Balancer, 40mm	3
VT-1223	Tire Mounting Clamp for All Passenger Rims	4
VT-1224	Wheel Width Caliper for Coats Balancers	5



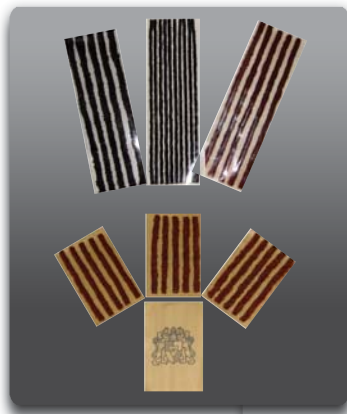
## ■ PATCHES, TIRE STRINGS AND STRING KITS



### Cold Patches

Dual-purpose self-vulcanizing patches can be used in both normal and hot temperatures.

Part No.	Description	Part No.	Description
P-025	Round, 25mm Diameter. 100/Box.	P-080	Round, 80mm Diameter. 20/Box.
P-035	Round, 35mm Diameter. 50/Box.	P-100	Round, 100mm Diameter. 20/Box.
P-045	Round, 45mm Diameter. 40/Box.	P-125	Round, 125mm Diameter. 10/Box.
P-060	Round, 60mm Diameter. 30/Box.		



### Tire Repair Strings

Can be used in passenger or truck, radial or bias-ply tires. Custom Backings Available.  
SEALING BY COMPRESSION. RECOMMENDED FOR TEMPORARY REPAIRS ONLY.

Part No.	Description	Part No.	Description
STR-A04B	Black. Fat (6mm). 4" Long.	STR-B08R	Brown. Thin (3.5mm). 8" Long.
STR-A04R	Brown. Fat (6mm). 4" Long.	STR-B16B	Black. Thin (3.5mm). 16" Long.
STR-A08B	Black. Fat (6mm). 8" Long.	STR-B16R	Brown. Thin (3.5mm). 16" Long.
STR-A08R	Brown. Fat (6mm). 8" Long.	STR-C04B	Black. Medium (4.5mm). 4" Long.
STR-A16B	Black. Fat (6mm). 16" Long.	STR-C04R	Brown. Medium (4.5mm). 4" Long.
STR-A16R	Brown. Fat (6mm). 16" Long.	STR-C08B	Black. Medium (4.5mm). 8" Long.
STR-B04B	Black. Thin (3.5mm). 4" Long.	STR-C08R	Brown. Medium (4.5mm). 8" Long.
STR-B04R	Brown. Thin (3.5mm). 4" Long.	STR-C16B	Black. Medium (4.5mm). 16" Long.
STR-B08B	Black. Thin (3.5mm). 8" Long.	STR-C16R	Brown. Medium (4.5mm). 16" Long.



### Truck/Passenger String Kit

Custom Colors and Configurations Available

Part No.	Description
STR-K1	Tire String Tool Box Kit. Contains:
	1 Solid Chrome Handle Removable Insertion Tool. 3" Needle for Passenger Car
	1 Solid Chrome Handle Removable Smooth Spiral Rasp
	1 Replaceable 7" Insertion Needle for Truck Application
	1 Replacement Long Spiral Rasp for Truck Application
	15 Pieces 8" Strings and 30 Pieces 4" Strings
	1 Cutting Knife
	1 Lubricant Jar
	1 Allen Wrench to Lock/Unlock Needles



### Passenger Tire String Kit

Custom Colors and Configurations Available.

Part No.	Description
STR-K2	Tire String Tool Box Kit. Contains:
	12 Sheets of 4" Strings. 5 Pieces/Sheet
	1 Solid Metal Handle Removable Split Eye Insertion Tool
	1 Solid Metal Handle Removable Smooth Spiral Rasp
	1 Lubricant Jar
	1 Allen Wrench to Remove Needles
	1 Cutting Knife



## WHEEL WEIGHTS

Custom Packaging Available.



### Lead Stick-On Weights

Part No.	Description	Part No.	Description	Part No.	Description
W-025S	12 Pieces / Strip	W-050S	12 Pieces / Strip	W-100S	6 Pieces / Strip
1/4 oz	52 Strips / Box	1/2 oz	28 Strips / Box	1 oz	30 Strips / Box
	4 Boxes / Case		4 Boxes / Case		4 Boxes / Case

### Steel Stick-On Weights

Part No.	Description	Part No.	Description	Part No.	Description
W-025S R	Regular Profile	W-025 L	Low Profile	W-050 L	Low Profile
1/4 oz	12 Pieces / Strip	1/4 oz	12 Pieces / Strip	1/2 oz	6 Pieces / Strip
	52 Strips / Box		52 Strips / Box		52 Strips / Box
	4 Boxes / Case		4 Boxes / Case		4 Boxes / Case

## TPMS PARTS AND ACCESSORIES



### Schrader TPMS System Service Kit

Custom Configuration Available. All Items Can Be Ordered Separately.

Part No.	For	Part No.	Description
20028AK	Crossfire	20195	Bag of 25 Grey Plastic Caps
	Prowler	20250	Two-Head Hex Cover Remover
	300M		
	Liberty		
	Grand Cherokee		
20096AK	Aviator	TPMS-K1	Schrader Service Kit. Includes:
20107AK	Yukon		10 Bags of 20028AK
	Yukon XL		10 Bags of 20096AK
	Escalade ESV		10 Bags of 20107AK
	Escalade EXT		10 Bags of 20116AK
20116AK	Envoy		10 Bags of 20117AK
	Envoy XUV		10 Bags of 20135AK
	Rainier		2 Bags of 20195 Plastic Cap
20117AK	C5 Corvette		1 20250 Hex Remover
20135AK	Expedition		
	Navigator		

*\* The above pack each contains: 1 aluminum hex cover, 1 gray plastic cap, 1 red valve core and 1 rubber grommet.*



### TPMS Parts and Accessories

Part No.	Description
VT-1115TQ	Calibrated Valve Core Tool for Proper Torquing
20250	11 mm / 12mm Hex Nut Removal Tool
TPMS STRAP	Stainless Steel Strap fits 17"-26" Wheels
TR413 TPMS	Rubber Valve Stems with Self-Threading Screw to Hold Sensors
TR413C TPMS	Rubber Sensor Valve with Chrome Cap and Sleeve
VH-8 TPMS	Outer-Mount Chrome Valve with Sensor Loop
VW9-2P TPMS	2-Piece 90 Degree Low Profile Valve with Sensor Loop



## ■ WIRE WHEELS AND WIRE WHEEL PARTS



### Knock-Off Wire Wheels

Comes with adapter and cap (Gold cap for Center Gold or All Gold wheel).  
Standard, Reverse and FW Drive offsets available on all sizes. Center Gold and All Gold Available on all sizes.  
Pre-assembled wheels and wheel parts available with special order.  
Regular stocking items are listed below.

Part No.	Size	Spoke	Offset	Finish
13X7-100R	13x7	100	Reverse	Chrome
13X7-100S	13x7	100	Standard	Chrome
13X7-100G	13x7	100	Reverse	Center Gold
14X7-100R	14x7	100	Reverse	Chrome
14X7-100S	14x7	100	Standard	Chrome
14X7-100G	14x7	100	Reverse	Center Gold
15X7-100R	15x7	100	Reverse	Chrome
15X7-100S	15x7	100	Standard	Chrome
15X7-100G	15X7	100	Standard	Center Gold
16X7-100S	16x7	100	Standard	Chrome
16X7-100R	16x7	100	Reverse	Chrome
17X8-100S	17x8	100	Standard	Chrome
17X8-100R	17x8	100	Reverse	Chrome
18X8-100S	18x8	100	Standard	Chrome
18X8-150S	15x8	150	Standard	Chrome
20X8-100S	20x8	100	Standard	Chrome
20X8-150S	20x8	150	Standard	Chrome
20X8-150G	20x8	150	Standard	Center Gold
22X8-150S	22x8	150	Standard	Chrome
22X8-180S	22x8	180	Standard	Chrome
22X8-180G	22x8	180	Standard	Center Gold



### Knock-Off Wire Wheel Adapters

Made of forged steel. Right side painted in red and left in white for easy identification.  
Bolt patterns are stamped on the adapters.

Part No.	Bolt Patterns	Part No.	Bolt Patterns
P05 R/L	5x4.5/4.75/5	P21 R/L	5x108/112/120
P06 R/L	6x5.5/135	P35 R/L	5x5.5/135
P14 R/L	4x100/4.25/4.5	P64 R/L	6x4.5
P15 R/L	5x100/4.25/4.5		



### Knock-Off Wire Wheel Caps

Made of solid brass. Chrome plated. Gold plating available upon request.

Part No.	Description	Part No.	Description
B19A R/L	10-Cut Bullet	21131 R/L	2-Bar Zenith Cutout
21221 R/L	2-Bar Swept Smooth	31221 R/L	3-Bar Swept Smooth
22221 R/L	2-Bar Swept Cutout	HEX-1 R/L	Octagon Smooth
21130 R/L	2-Bar Zenith Smooth	HEX-2 R/L	Octagon Cutout



## ■ WIRE WHEELS AND WIRE WHEEL PARTS



### Wire Wheel Installation Tools

Part No.	Fit
BW-2	2-Bar 10-sided Wrench to Install and Remove Bullet Caps
HW-2	2-Bar Octagon Wrench to Install and Remove Octagon Caps
HAMMER L	Heavy Duty 4-lb Lead Hammer to Install and Remover 2-Bar and 3-Bar Caps

## ■ WHEEL HOOKS AND DISPLAY RACKS



### Wheel Hooks

For wheel display. Black finish.

Part No.	Description
HK-1	Metal Hook with Screw Hole
HK-2	Slat-Wall Metal Hook
HK-3	Grid-Wall Metal Hook



### Wheel Racks

Black or Chrome Finish

Part No.	Description
RC-20B3	For up to 20" Wheel. 3 Cube, Black.
RC-20C3	For up to 20" Wheel. 3 Cube, Chrome.
RC-20B6	For up to 20" Wheel. 6 Cube, Black.
RC-20C6	For up to 20" Wheel. 6 Cube, Chrome.
RC-24B3	For up to 24" Wheel. 3 Cube, Black.
RC-24C3	For up to 24" Wheel. 3 Cube, Chrome.
RC-24B6	For up to 24" Wheel. 6 Cube, Black.
RC-24C6	For up to 24" Wheel. 6 Cube, Chrome.

**We drop ship anywhere around the world.**





## NOTES

---

---

---

---

---

---

---

---

---

---

---

---

---

---

---

---

---

---

---

---

---

---

---

---

---

---

---

---



## NOTES

---

---

---

---

---

---

---

---

---

---

---

---

---

---

---

---

---

---

---

---

---

---

---

---

---

---

---

---

---

---



## ■ WARRANTY

### PRODUCT WARRANTY

Instant Tools Inc. warrants its products to be free from defects in workmanship and material for a period of 30 days from the date of delivery to its customers.

It is very important to check merchandise upon receipt, and report any defects immediately.

Instant Tools will, at its option, refund the purchase price of or replace any items found to be defective, if written notice and proof of defects are given to Instant Tools within the warranty period. The defective items must be returned to Instant Tools unless otherwise instructed by Instant Tools in writing. Instant Tools may also authorize its customers to repair defective items and reimburse them for the cost.

Instant Tools disclaims all other expressed or implied warranties.

### SHIPPING WARRANTY

Instant Tools Inc. warrants its shipments to be free from shortages, damages and shipping errors.

Instant Tools will, at its option, refund, replace or exchange items shorted, damaged or mis-shipped, if they are reported within 5 working days and sufficient proof, such as signed delivery paper with shortages or damages marked, are provided.

It is very important to count cartons before signing delivery documents, and to mark shortages and visible damages on the documents. Instant Tools also urges its customers to check cartons upon receipt for concealed damages and shipping errors.

Instant Tools may not be responsible for shipping shortages, damages or errors if they are reported after 5 working days from the date of receipt by its customers, or if its customers fail to mark shortages and/or visible damages on the delivery paperwork.



*ROYAL*  
*WHEELS & ACCESSORIES*  
BY  
*INSTANT TOOLS INC.*



29724 Avenida De Las Banderas  
Rancho Santa Margarita, CA 92688  
Toll Free: 1-888-668-9588  
Tel: 949-459-9588  
Fax: 949-459-9506

[www.instanttoolsusa.com](http://www.instanttoolsusa.com)  
[www.royal-wheels.com](http://www.royal-wheels.com)